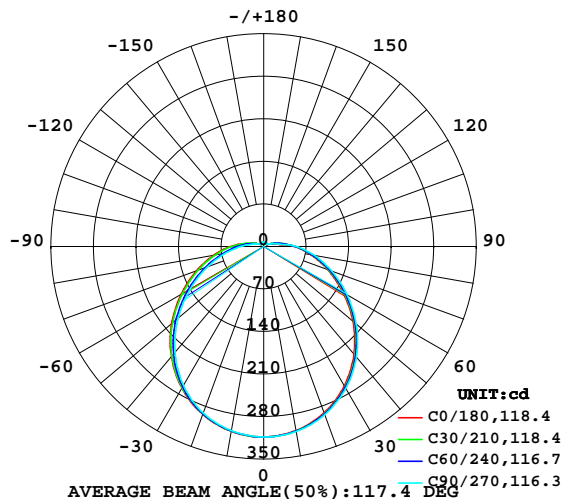


LUMINAIRE PHOTOMETRIC TEST REPORT

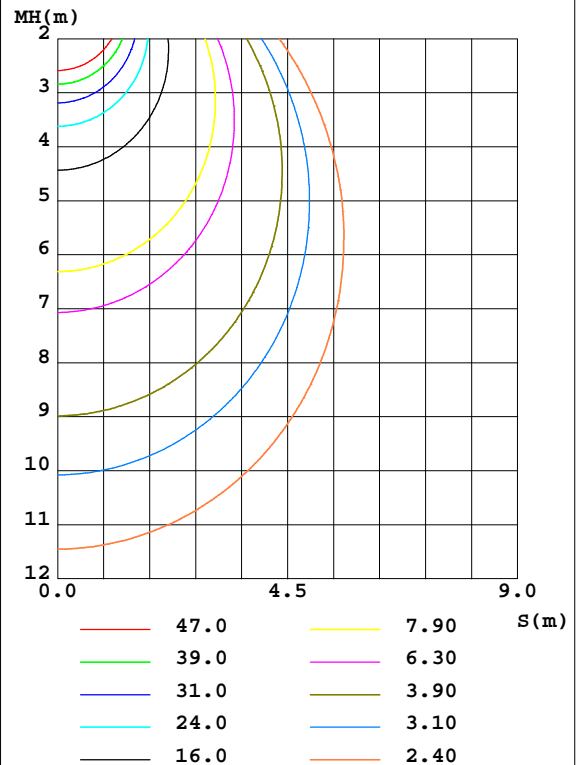
Test:U:221.70V I:0.0530A P:11.300W PF:0.9480 Freq:50.00Hz Lamp Flux:1116.34x1 lm		
NAME: D265 12W 000 4000K	TYPE:圆柱形	
MFR.:	DIM.: $\phi 265 \times 85\text{mm}$	
	SUR.: $\phi 265\text{mm}$	

DATA OF LAMP		PHOTOMETRIC DATA Eff: 98.79 lm/W			
MODEL		Imax(cd)	313.7	S/MH(C0/180)	1.26
NOMINAL POWER(W)	11.3	LOR(%)	100.0	S/MH(C90/270)	1.28
RATED VOLTAGE(V)	222	TOTAL FLUX(lm)	1116.3	η UP,DN(C0-180)	4.4,46.6
NOMINAL FLUX(lm)	1116.34	CIE CLASS	DIRECT	η UP,DN(C180-360)	4.2,44.8
LAMPS INSIDE	1	η up(%)	8.6	CIBSE SHR NOM	1.25
TEST VOLTAGE(V)	221.8	η down(%)	91.4	CIBSE SHR MAX	1.35

LUMINOUS INTENSITY DISTRIBUTION DIAGRAM



C0 PLANE ISOLUX DIAGRAM (UNIT:lx)



C Range: 0 - 360DEG
 C Interval: 30.0DEG
 Test Speed: HIGH
 Temperature:25.3DEG
 Operators:DAMIN
 Test Date:2019-05-22

γ Range: 0 - 180DEG
 γ Interval: 1.0DEG
 Test System:EVERFINE GO-2000B_V1 SYSTEM V2.0.406.11
 Humidity:65.0%
 Test Distance:8.000m [K=0.7063]
 Remarks: LF-GIR015YM0350H,D265-10S7P-V1.1

ZONAL FLUX DIAGRAM

ZONAL FLUX DIAGRAM:

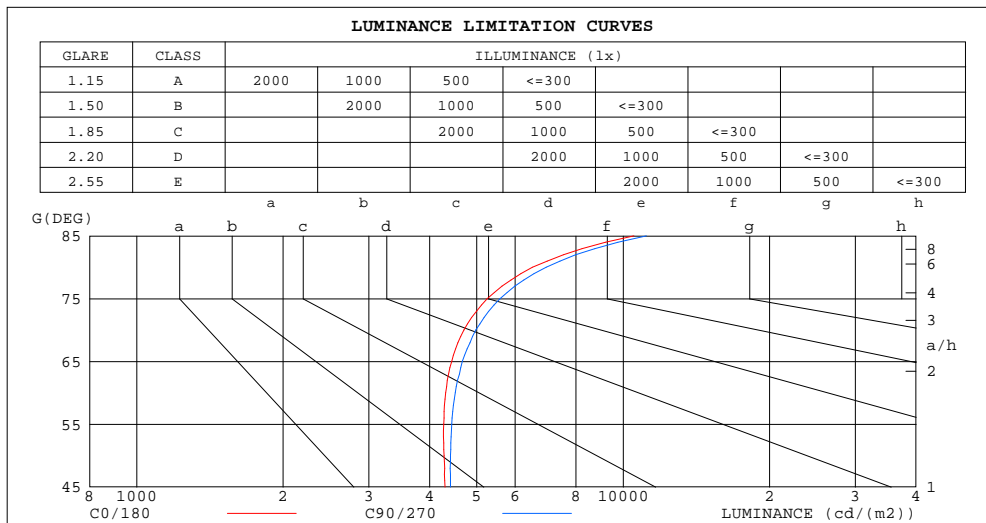
γ	C0	C45	C90	C135	C180	C225	C270	C315	γ	Φ zone	Φ total	%lum,lamp
10	307.5	308.4	309.0	309.2	308.9	308.4	307.6	307.0	0- 10	29.68	29.68	2.66,2.66
20	291.2	292.9	294.2	294.6	293.8	293.2	291.7	290.7	10- 20	85.19	114.9	10.3,10.3
30	265.3	267.9	270.0	270.2	269.4	267.7	264.1	264.3	20- 30	129.7	244.5	21.9,21.9
40	231.4	234.6	237.5	237.5	236.2	233.0	227.0	228.9	30- 40	157.2	401.8	36,36
50	192.0	195.4	199.0	199.0	198.1	192.3	183.9	188.1	40- 50	165.1	566.9	50.8,50.8
60	150.6	154.1	158.3	158.3	156.7	149.0	139.3	145.4	50- 60	154.3	721.2	64.6,64.6
70	112.2	115.1	119.4	119.6	117.8	108.9	98.40	106.4	60- 70	130.4	851.5	76.3,76.3
80	78.81	80.50	84.56	84.80	83.41	74.33	63.31	72.88	70- 80	99.97	951.5	85.2,85.2
90	50.32	51.87	53.38	55.48	54.48	48.01	37.81	47.31	80- 90	69.16	1021	91.4,91.4
100	23.67	30.00	25.34	32.77	25.65	28.26	21.22	27.93	90-100	41.83	1063	95.2,95.2
110	13.04	15.02	13.62	17.20	14.37	15.19	12.44	14.88	100-110	22.09	1085	97.2,97.2
120	7.523	7.850	7.669	8.928	8.422	8.386	7.618	8.299	110-120	10.98	1096	98.1,98.1
130	5.863	5.918	5.938	6.483	6.435	6.406	6.178	6.414	120-130	6.260	1102	98.7,98.7
140	5.918	5.887	5.924	6.259	6.341	6.168	6.147	6.074	130-140	4.716	1107	99.1,99.1
150	6.342	6.291	6.479	6.608	6.756	6.545	6.535	6.431	140-150	3.937	1110	99.5,99.5
160	6.864	6.794	7.090	7.174	7.205	7.017	6.917	6.853	150-160	3.110	1114	99.8,99.8
170	7.267	7.279	7.573	7.546	7.555	7.404	7.388	7.198	160-170	2.035	1116	99.9,99.9
180	7.609	7.499	7.613	7.527	7.621	7.498	7.607	7.532	170-180	0.7117	1116	100,100
DEG	LUMINOUS INTENSITY:cd									UNIT:lm		

C Range: 0 - 360DEG
 C Interval: 30.0DEG
 Test Speed: HIGH
 Temperature:25.3DEG
 Operators:DAMIN
 Test Date:2019-05-22

γ Range: 0 - 180DEG
 γ Interval: 1.0DEG
 Test System:EVERFINE GO-2000B_V1 SYSTEM V2.0.406.11
 Humidity:65.0%
 Test Distance:8.000m [K=0.7063]
 Remarks: LF-GIR015YM0350H,D265-10S7P-V1.1

LUMINANCE LIMITATION CURVES

Test:U:221.70V I:0.0530A P:11.300W PF:0.9480 Freq:50.00Hz Lamp Flux:1116.34x1 lm		
NAME: D265 12W 000 4000K	TYPE:圆柱形	
MFR.:	DIM.: $\phi 265 \times 85\text{mm}$	
	SUR.: $\phi 265\text{mm}$	



LUMINANCE cd/(m2)		
G(DEG)	C0/180	C90/270
85	10528	11160
80	6510	6949
75	5257	5584
70	4707	4981
65	4441	4672
60	4319	4518
55	4278	4442
50	4285	4418
45	4301	4415

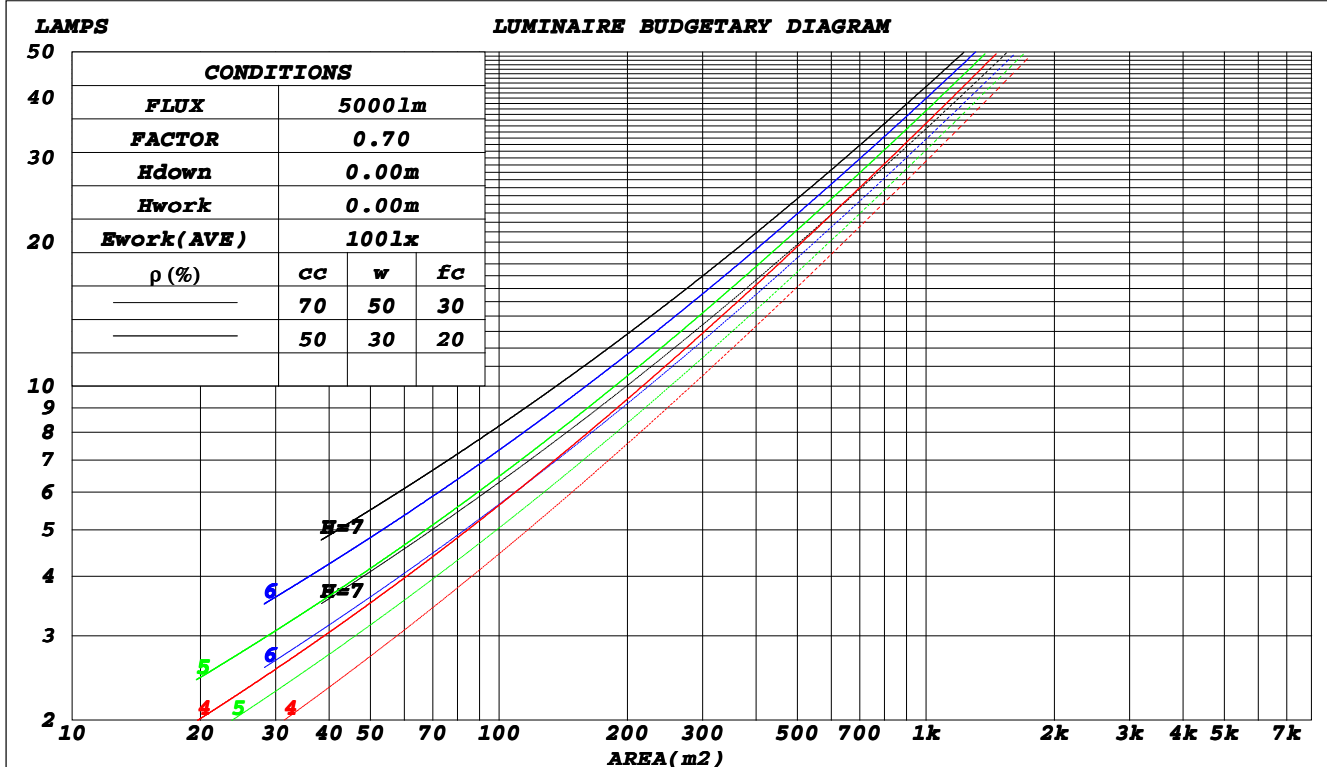
C Range: 0 - 360DEG
C Interval: 30.0DEG
Test Speed: HIGH
Temperature: 25.3DEG
Operators: DAMIN
Test Date: 2019-05-22

γ Range: 0 - 180DEG
 γ Interval: 1.0DEG
Test System: EVERFINE GO-2000B_V1 SYSTEM V2.0.406.11
Humidity: 65.0%
Test Distance: 8.000m [K=0.7063]
Remarks: LF-GIR015YM0350H, D265-10S7P-V1.1

CU AND LUMINAIRE BUDGETARY ESTIMATE DIAGRAM

Test:U:221.70V I:0.0530A P:11.300W PF:0.9480 Freq:50.00Hz Lamp Flux:1116.34x1 lm		
NAME: D265 12W 000 4000K	TYPE:圆柱形	
MFR.:	DIM.: φ265*85mm	
	SUR.:φ265mm	

ρ _{cc}	80%			70%			50%			30%			10%			0
ρ _w	50%	30%	10%	50%	30%	10%	50%	30%	10%	50%	30%	10%	50%	30%	10%	0
ρ _{fc}	20%			20%			20%			20%			20%			0
RCR	RCR:Room Cavity Ratio						Coefficients of Utilization(CU)									
0.0	1.17	1.17	1.17	1.13	1.13	1.13	1.06	1.06	1.06	1.00	1.00	1.00	.94	.94	.94	.91
1.0	.99	.94	.89	.96	.91	.87	.90	.86	.83	.84	.81	.79	.79	.77	.75	.72
2.0	.85	.78	.71	.82	.76	.70	.77	.72	.67	.73	.68	.64	.69	.65	.61	.58
3.0	.74	.65	.58	.72	.64	.57	.68	.61	.55	.64	.58	.53	.60	.55	.51	.48
4.0	.65	.56	.49	.64	.55	.48	.60	.52	.47	.57	.50	.45	.53	.48	.44	.41
5.0	.58	.49	.42	.57	.48	.41	.54	.46	.40	.51	.44	.39	.48	.42	.38	.35
6.0	.52	.43	.36	.51	.42	.36	.48	.41	.35	.46	.39	.34	.43	.38	.33	.31
7.0	.47	.38	.32	.46	.38	.32	.44	.36	.31	.42	.35	.30	.40	.34	.29	.27
8.0	.43	.34	.28	.42	.34	.28	.40	.33	.27	.38	.32	.27	.36	.30	.26	.24
9.0	.40	.31	.26	.39	.31	.25	.37	.30	.25	.35	.29	.24	.34	.28	.23	.22
10.0	.36	.28	.23	.36	.28	.23	.34	.27	.22	.33	.26	.22	.31	.25	.21	.19



C Range: 0 - 360DEG
 C Interval: 30.0DEG
 Test Speed: HIGH
 Temperature: 25.3DEG
 Operators: DAMIN
 Test Date: 2019-05-22

γ Range: 0 - 180DEG
 γ Interval: 1.0DEG
 Test System: EVERFINE GO-2000B_V1 SYSTEM V2.0.406.11
 Humidity: 65.0%
 Test Distance: 8.000m [K=0.7063]
 Remarks: LF-GIR015YM0350H, D265-10S7P-V1.1

WEC AND CCEC

Test:U:221.70V I:0.0530A P:11.300W PF:0.9480 Freq:50.00Hz Lamp Flux:1116.34x1 lm		
NAME: D265 12W 000 4000K	TYPE:圆柱形	
MFR.:	DIM.: φ265*85mm	
	SUR.:φ265mm	

ρ _{cc}	80%			70%			50%			30%			10%			0	
ρ _w	50%	30%	10%	50%	30%	10%	50%	30%	10%	50%	30%	10%	50%	30%	10%	0	
ρ _{fc}	20%			20%			20%			20%			20%			0	
RCR	RCR:Room Cavity Ratio						Wall Exitance Coefficients(WEC)										
0.0																	
1.0	.366	.208	.066	.356	.203	.064	.338	.194	.062	.321	.185	.059	.305	.177	.057		
2.0	.323	.177	.054	.314	.173	.053	.297	.165	.051	.282	.158	.050	.268	.152	.048		
3.0	.289	.154	.046	.282	.151	.045	.267	.145	.044	.253	.139	.043	.240	.133	.041		
4.0	.262	.136	.040	.255	.134	.039	.242	.128	.038	.229	.123	.037	.218	.118	.036		
5.0	.239	.122	.035	.233	.120	.035	.221	.115	.034	.210	.111	.033	.200	.107	.032		
6.0	.220	.110	.032	.214	.108	.031	.204	.104	.030	.193	.101	.030	.184	.097	.029		
7.0	.204	.101	.029	.198	.099	.028	.189	.095	.027	.179	.092	.027	.171	.089	.026		
8.0	.189	.092	.026	.184	.091	.026	.176	.088	.025	.167	.085	.024	.159	.082	.024		
9.0	.177	.085	.024	.172	.084	.024	.164	.081	.023	.157	.078	.022	.149	.076	.022		
10.0	.166	.079	.022	.162	.078	.022	.154	.076	.021	.147	.073	.021	.140	.071	.020		

ρ _{cc}	80%			70%			50%			30%			10%			0
ρ _w	50%	30%	10%	50%	30%	10%	50%	30%	10%	50%	30%	10%	50%	30%	10%	0
ρ _{fc}	20%			20%			20%			20%			20%			0
RCR	RCR:Room Cavity Ratio						Ceiling Cavity Exitance Coefficients(CCEC)									
0.0	.256	.256	.256	.219	.219	.219	.149	.149	.149	.086	.086	.086	.027	.027	.027	
1.0	.250	.221	.196	.214	.190	.168	.146	.131	.117	.084	.076	.068	.027	.024	.022	
2.0	.243	.198	.161	.208	.170	.139	.142	.118	.097	.082	.069	.057	.026	.022	.018	
3.0	.235	.181	.138	.201	.156	.120	.138	.109	.084	.080	.063	.050	.026	.021	.016	
4.0	.227	.168	.123	.195	.145	.107	.134	.101	.075	.077	.059	.045	.025	.019	.015	
5.0	.219	.158	.113	.188	.137	.098	.130	.096	.069	.075	.056	.041	.024	.018	.014	
6.0	.212	.150	.106	.182	.130	.092	.126	.091	.065	.073	.053	.039	.024	.017	.013	
7.0	.205	.143	.100	.176	.124	.087	.122	.087	.062	.071	.051	.037	.023	.017	.012	
8.0	.198	.137	.096	.170	.119	.084	.118	.084	.059	.069	.049	.035	.022	.016	.012	
9.0	.192	.133	.093	.165	.115	.081	.114	.081	.057	.067	.048	.034	.022	.016	.011	
10.0	.186	.128	.090	.160	.111	.079	.111	.078	.056	.065	.046	.033	.021	.015	.011	

C Range: 0 - 360DEG
C Interval: 30.0DEG
Test Speed: HIGH
Temperature:25.3DEG
Operators:DAMIN
Test Date:2019-05-22

γ Range: 0 - 180DEG
γ Interval: 1.0DEG
Test System:EVERFINE GO-2000B_V1 SYSTEM V2.0.406.11
Humidity:65.0%
Test Distance:8.000m [K=0.7063]
Remarks: LF-GIR015YM0350H,D265-10S7P-V1.1

UGR(Unified Glare Rating) Table

Test:U:221.70V I:0.0530A P:11.300W PF:0.9480 Freq:50.00Hz Lamp Flux:1116.34x1 lm										
NAME: D265 12W 000 4000K					TYPE:圆柱形					
MFR.:					DIM.: φ265*85mm					
					SUR.:φ265mm					
ceiling/cavity	0.7	0.7	0.5	0.5	0.3	0.7	0.7	0.5	0.5	0.3
walls	0.5	0.3	0.5	0.3	0.3	0.5	0.3	0.5	0.3	0.3
working plane	0.2	0.2	0.2	0.2	0.2	0.2	0.2	0.2	0.2	0.2
Room dimensions	Viewed crosswise					Viewed endwise				
x = 2H y = 2H	17.3	18.8	17.7	19.2	19.6	17.5	19.0	17.9	19.3	19.7
3H	19.3	20.7	19.7	21.1	21.5	19.5	20.9	19.9	21.3	21.7
4H	20.3	21.6	20.8	22.0	22.5	20.6	21.9	21.0	22.3	22.7
6H	21.4	22.6	21.9	23.1	23.5	21.7	22.9	22.2	23.4	23.8
8H	22.0	23.2	22.5	23.6	24.1	22.3	23.5	22.8	23.9	24.4
12H	22.7	23.8	23.1	24.3	24.7	23.0	24.1	23.5	24.6	25.1
4H 2H	18.1	19.4	18.5	19.8	20.2	18.2	19.5	18.6	19.9	20.3
3H	20.3	21.4	20.7	21.8	22.3	20.4	21.6	20.9	22.0	22.5
4H	21.4	22.5	21.9	23.0	23.5	21.6	22.7	22.1	23.2	23.7
6H	22.7	23.7	23.2	24.2	24.7	23.0	23.9	23.5	24.4	24.9
8H	23.4	24.3	23.9	24.8	25.4	23.7	24.5	24.2	25.1	25.6
12H	24.2	25.0	24.7	25.5	26.1	24.5	25.3	25.0	25.8	26.4
8H 4H	21.9	22.8	22.5	23.3	23.9	22.1	23.0	22.6	23.5	24.1
6H	23.5	24.2	24.0	24.8	25.4	23.7	24.4	24.2	25.0	25.6
8H	24.3	25.0	24.9	25.6	26.2	24.6	25.2	25.1	25.8	26.4
12H	25.3	25.9	25.9	26.5	27.2	25.6	26.1	26.2	26.7	27.4
12H 4H	22.0	22.8	22.6	23.4	24.0	22.2	23.0	22.7	23.5	24.1
6H	23.7	24.3	24.3	24.9	25.6	23.9	24.5	24.4	25.1	25.7
8H	24.7	25.2	25.3	25.8	26.5	24.8	25.4	25.4	26.0	26.7
Variations with the observer position at spacings:										
S = 1.0H	+ 0.1 / - 0.1					+ 0.1 / - 0.1				
1.5H	+ 0.2 / - 0.3					+ 0.2 / - 0.3				
2.0H	+ 0.2 / - 0.3					+ 0.2 / - 0.3				

CIE Pub.117, 1116 lm Total Lamp Luminous Flux Corrected ($8\log(F/F_0) = 0.4$)

C Range: 0 - 360DEG
C Interval: 30.0DEG
Test Speed: HIGH
Temperature:25.3DEG
Operators:DAMIN
Test Date:2019-05-22

γ Range: 0 - 180DEG
γ Interval: 1.0DEG
Test System:EVERFINE GO-2000B_V1 SYSTEM V2.0.406.11
Humidity:65.0%
Test Distance:8.000m [K=0.7063]
Remarks: LF-GIR015YM0350H,D265-10S7P-V1.1

UTILIZATION FACTORS TABLE

Test:U:221.70V I:0.0530A P:11.300W PF:0.9480 Freq:50.00Hz Lamp Flux:1116.34x1 lm		
NAME: D265 12W 000 4000K	TYPE:圆柱形	
MFR.:	DIM.: $\phi 265 \times 85\text{mm}$	
	SUR.: $\phi 265\text{mm}$	

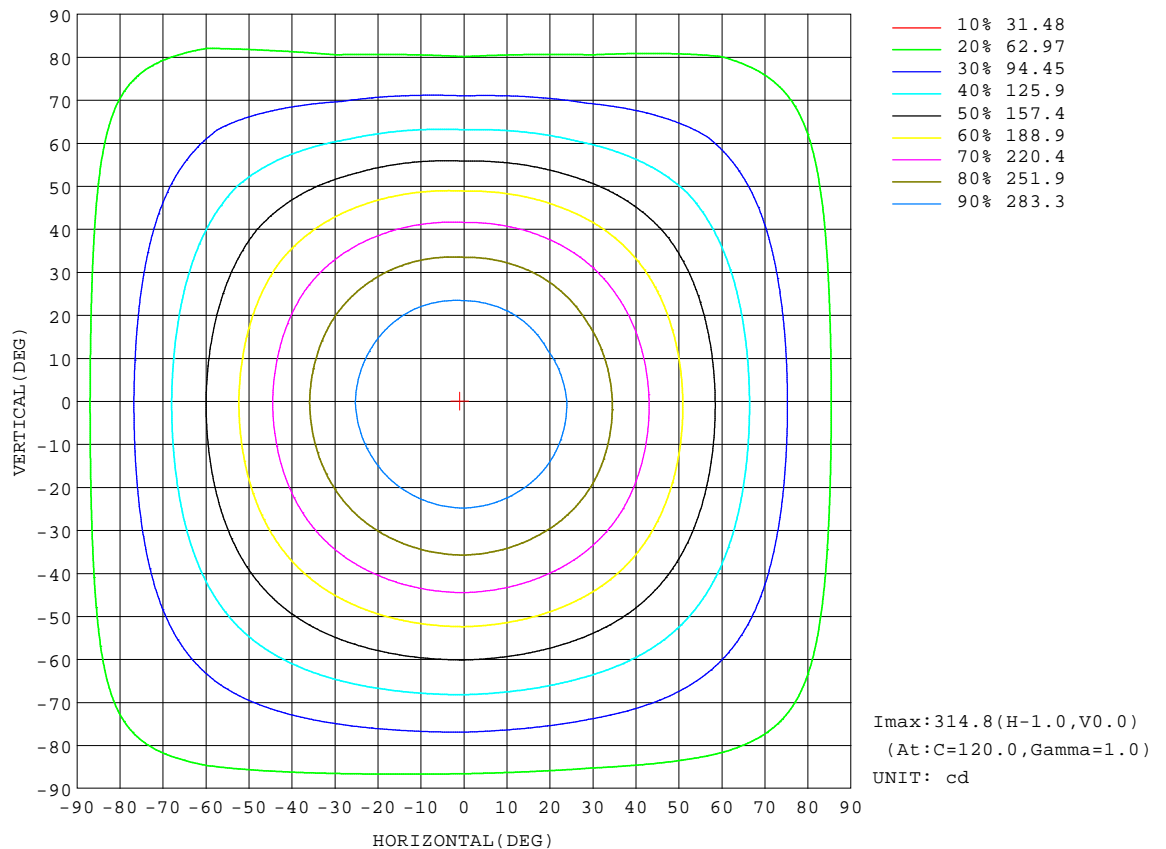
REFLECTANCE										
Ceiling	0.8	0.8	0.8	0.7	0.7	0.7	0.5	0.5	0.5	0
Walls	0.7	0.5	0.3	0.7	0.5	0.3	0.7	0.5	0.3	0
Working plane	0.2	0.2	0.2	0.2	0.2	0.2	0.2	0.2	0.2	0
ROOM INDEX	UTILIZATION FACTORS(PERCENT) $k(RI) \times RCR = 5$									
$k = 0.60$	52	40	33	51	40	33	50	39	33	26
0.80	62	49	42	60	49	41	58	48	41	33
1.00	70	57	49	68	57	49	65	58	48	40
1.25	77	65	57	75	64	56	71	62	55	47
1.50	82	70	62	79	69	62	76	67	60	51
2.00	89	78	71	86	77	70	82	74	68	58
2.50	93	83	76	90	82	75	85	78	72	62
3.00	96	88	81	94	86	80	88	82	77	66
4.00	101	94	88	98	91	86	92	87	82	71
5.00	104	97	92	100	95	90	94	90	86	74
ROOM INDEX	UF(total)									Direct
According to DIN EN 13032-2 2004			Suspended					SHR NOM = 1.25		

C Range: 0 - 360DEG
C Interval: 30.0DEG
Test Speed: HIGH
Temperature: 25.3DEG
Operators: DAMIN
Test Date: 2019-05-22

γ Range: 0 - 180DEG
 γ Interval: 1.0DEG
Test System: EVERFINE GO-2000B_V1 SYSTEM V2.0.406.11
Humidity: 65.0%
Test Distance: 8.000m [K=0.7063]
Remarks: LF-GIR015YM0350H, D265-10S7P-V1.1

ISOCANDELA DIAGRAM

Test:U:221.70V I:0.0530A P:11.300W PF:0.9480 Freq:50.00Hz Lamp Flux:1116.34x1 lm		
NAME: D265 12W 000 4000K	TYPE:圆柱形	
MFR.:	DIM.: $\phi 265 \times 85\text{mm}$	
	SUR.: $\phi 265\text{mm}$	



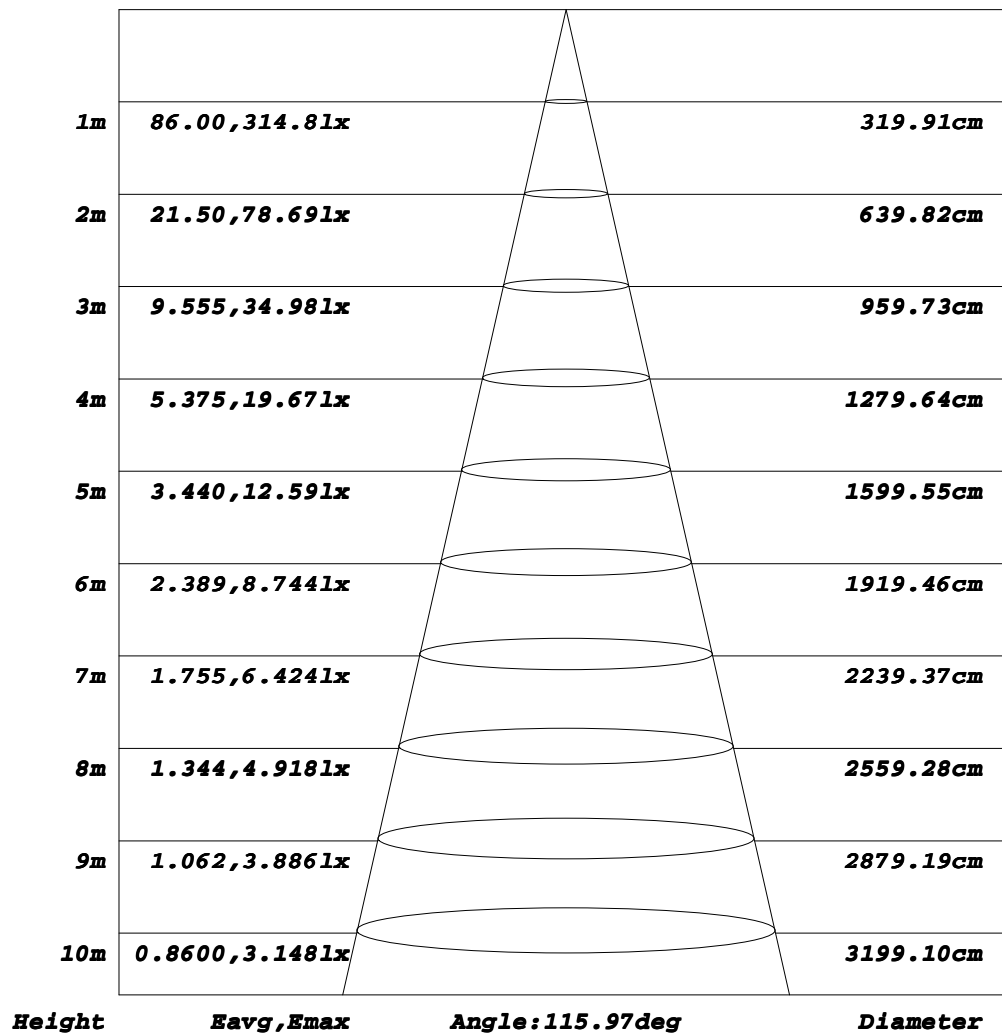
C Range: 0 - 360DEG
C Interval: 30.0DEG
Test Speed: HIGH
Temperature: 25.3DEG
Operators: DAMIN
Test Date: 2019-05-22

γ Range: 0 - 180DEG
 γ Interval: 1.0DEG
Test System: EVERFINE GO-2000B_V1 SYSTEM V2.0.406.11
Humidity: 65.0%
Test Distance: 8.000m [K=0.7063]
Remarks: LF-GIR015YM0350H, D265-10S7P-V1.1

AAI Figure

Test:U:221.70V I:0.0530A P:11.300W PF:0.9480 Freq:50.00Hz Lamp Flux:1116.34x1 lm		
NAME: D265 12W 000 4000K	TYPE:圆柱形	
MFR.:	DIM.: $\phi 265 \times 85\text{mm}$	
	SUR.: $\phi 265\text{mm}$	

Flux out:691.9 lm



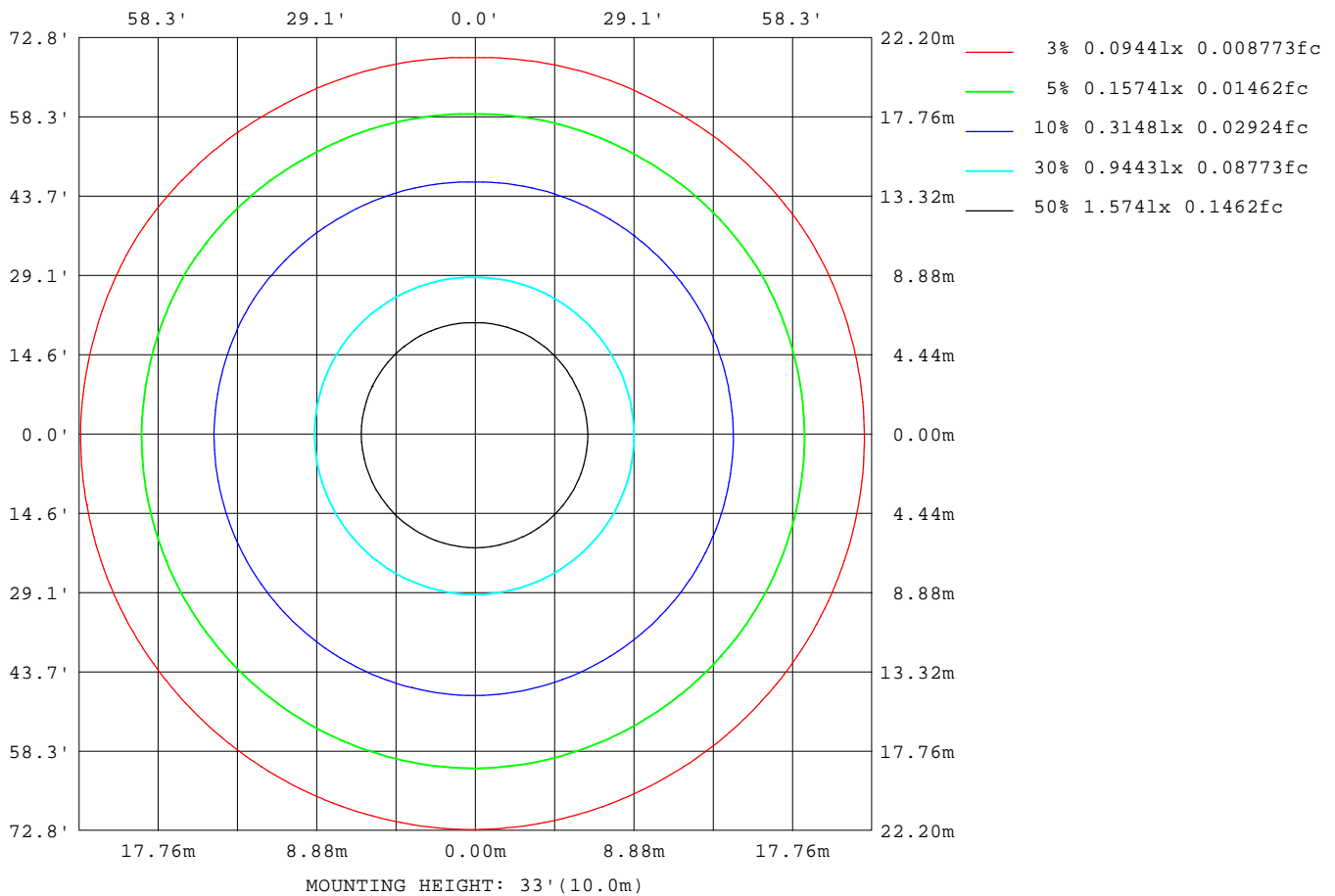
Note: The Curves indicate the illuminated area and the average illumination when the luminaire is at different distance.

C Range: 0 - 360DEG
 C Interval: 30.0DEG
 Test Speed: HIGH
 Temperature: 25.3DEG
 Operators: DAMIN
 Test Date: 2019-05-22

γ Range: 0 - 180DEG
 γ Interval: 1.0DEG
 Test System: EVERFINE GO-2000B_V1 SYSTEM V2.0.406.11
 Humidity: 65.0%
 Test Distance: 8.000m [K=0.7063]
 Remarks: LF-GIR015YM0350H, D265-10S7P-V1.1

ISOLUX DIAGRAM

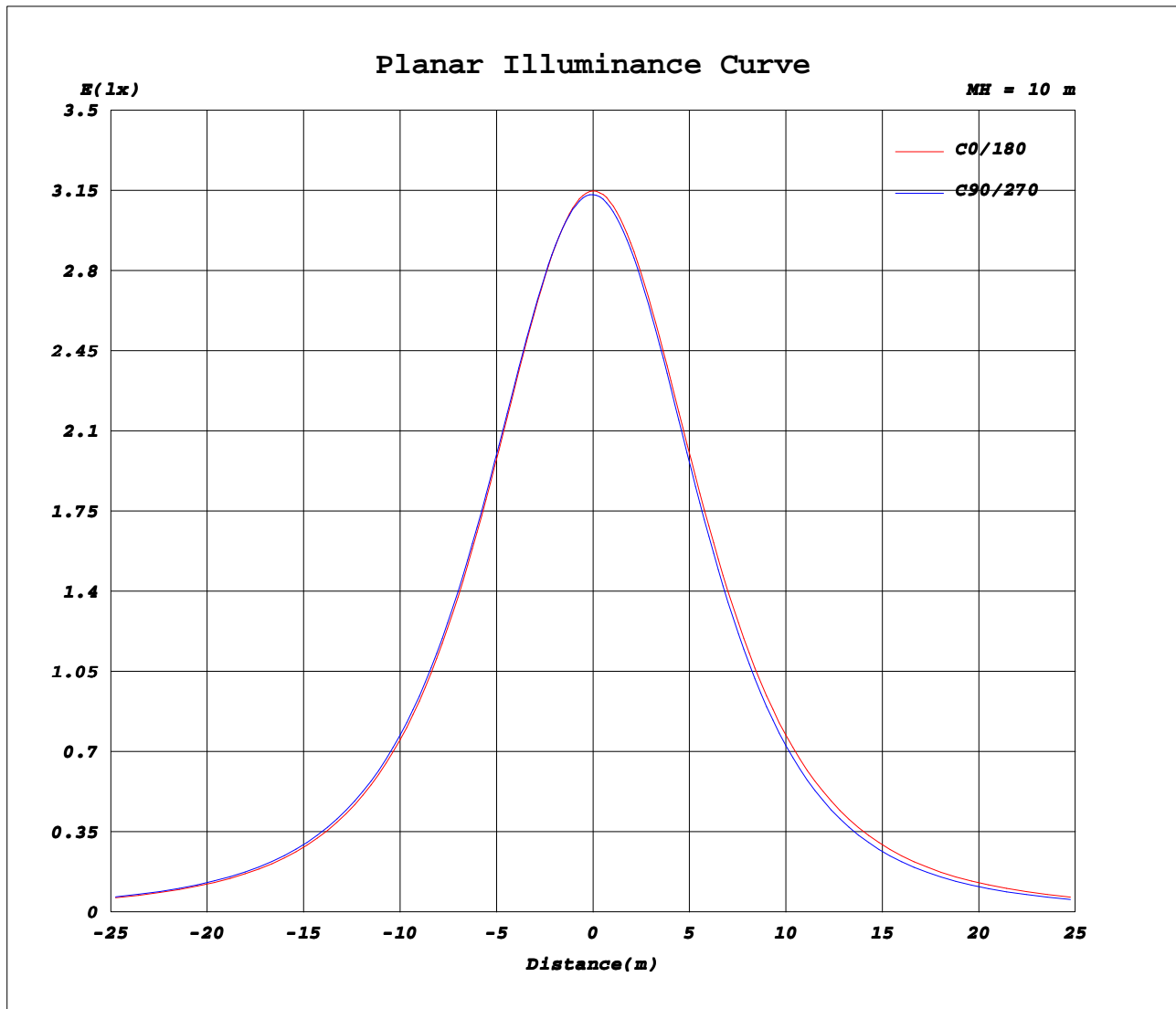
Test:U:221.70V I:0.0530A P:11.300W PF:0.9480 Freq:50.00Hz Lamp Flux:1116.34x1 lm		
NAME: D265 12W 000 4000K	TYPE:圆柱形	
MFR.:	DIM.: $\phi 265 \times 85\text{mm}$	
	SUR.: $\phi 265\text{mm}$	



C Range: 0 - 360DEG
C Interval: 30.0DEG
Test Speed: HIGH
Temperature: 25.3DEG
Operators: DAMIN
Test Date: 2019-05-22

γ Range: 0 - 180DEG
 γ Interval: 1.0DEG
Test System: EVERFINE GO-2000B_V1 SYSTEM V2.0.406.11
Humidity: 65.0%
Test Distance: 8.000m [K=0.7063]
Remarks: LF-GIR015YM0350H, D265-10S7P-V1.1

Planar Illuminance Curve



C Range: 0 - 360DEG
C Interval: 30.0DEG
Test Speed: HIGH
Temperature: 25.3DEG
Operators: DAMIN
Test Date: 2019-05-22

γ Range: 0 - 180DEG
 γ Interval: 1.0DEG
Test System: EVERFINE GO-2000B_V1 SYSTEM V2.0.406.11
Humidity: 65.0%
Test Distance: 8.000m [K=0.7063]
Remarks: LF-GIR015YM0350H,D265-10S7P-V1.1

LUMINOUS DISTRIBUTION INTENSITY DATA

Test:U:221.70V I:0.0530A P:11.300W PF:0.9480 Freq:50.00Hz Lamp Flux:1116.34x1 lm		
NAME: D265 12W 000 4000K	TYPE:圆柱形	
MFR.:	DIM.: φ265*85mm	
	SUR.:φ265mm	

Table--1

UNIT: cd

C (DEG) γ (DEG)	0	30	60	90	120	150	180	210	240	270	300	330							
0	314	314	314	314	314	314	314	314	314	314	314	314							
5	312	312	312	313	313	313	312	313	312	312	312	311							
10	307	308	308	309	309	309	309	308	308	308	307	307							
15	300	302	302	303	303	303	303	302	302	301	301	300							
20	291	293	293	294	294	295	294	293	293	292	291	290							
25	279	281	282	283	283	284	283	282	281	279	279	278							
30	265	267	268	270	270	270	269	269	267	264	264	264							
35	249	252	253	255	255	255	254	253	250	247	247	248							
40	231	234	235	238	237	238	236	235	231	227	228	230							
45	212	215	216	219	218	219	218	216	211	206	208	210							
50	192	195	196	199	199	199	198	196	189	184	186	190							
55	171	174	176	179	179	179	177	175	166	161	163	169							
60	151	153	155	158	158	158	157	154	144	139	142	149							
65	131	133	135	138	139	138	137	134	123	118	121	130							
70	112	114	116	119	120	120	118	115	103	98.4	102	111							
75	94.9	96.4	98.0	101	102	102	100.0	97.2	84.2	80.0	83.5	93.9							
80	78.8	80.2	80.8	84.6	84.4	85.2	83.4	80.6	68.0	63.3	68.0	77.8							
85	64.0	65.3	65.5	68.2	69.0	69.8	68.3	65.6	54.7	48.7	55.0	63.2							
90	50.3	52.0	51.7	53.4	54.9	56.1	54.5	52.2	43.8	37.8	44.3	50.3							
95	33.3	40.5	39.6	36.4	42.4	44.0	42.4	40.5	34.1	29.4	34.7	39.0							
100	23.7	30.4	29.6	25.3	32.0	33.5	25.6	30.5	26.0	21.2	26.6	29.3							
105	17.6	21.6	21.4	18.8	23.6	24.8	19.4	22.5	19.4	16.4	19.9	21.4							
110	13.0	15.0	15.0	13.6	16.6	17.8	14.4	16.2	14.2	12.4	14.6	15.1							
115	9.70	10.6	10.5	10.0	11.6	12.7	10.7	11.5	10.5	9.52	10.8	10.7							
120	7.52	7.86	7.84	7.67	8.59	9.26	8.42	8.53	8.24	7.62	8.42	8.18							
125	6.39	6.49	6.50	6.43	7.09	7.35	7.07	7.00	7.00	6.62	7.12	6.95							
130	5.86	5.94	5.89	5.94	6.41	6.56	6.43	6.34	6.47	6.18	6.48	6.35							
135	5.79	5.87	5.71	5.83	6.19	6.28	6.28	6.07	6.24	6.07	6.18	6.05							
140	5.92	5.88	5.89	5.92	6.23	6.29	6.34	6.11	6.23	6.15	6.11	6.04							
145	6.11	6.15	6.07	6.19	6.39	6.39	6.47	6.29	6.35	6.41	6.24	6.19							
150	6.34	6.27	6.31	6.48	6.62	6.60	6.76	6.58	6.51	6.54	6.41	6.45							
155	6.55	6.55	6.57	6.75	6.91	6.94	6.99	6.84	6.72	6.76	6.67	6.59							
160	6.86	6.76	6.83	7.09	7.18	7.17	7.20	7.08	6.96	6.92	6.90	6.81							
165	7.09	7.00	7.12	7.36	7.38	7.37	7.41	7.29	7.16	7.19	7.10	7.01							
170	7.27	7.20	7.36	7.57	7.56	7.53	7.55	7.48	7.32	7.39	7.20	7.19							
175	7.36	7.43	7.46	7.68	7.65	7.63	7.61	7.55	7.43	7.40	7.40	7.30							
180	7.61	7.45	7.54	7.61	7.59	7.46	7.62	7.44	7.55	7.61	7.60	7.46							

C Range: 0 - 360DEG

C Interval: 30.0DEG

Test Speed: HIGH

Temperature: 25.3DEG

Operators: DAMIN

Test Date: 2019-05-22

γ Range: 0 - 180DEG

γ Interval: 1.0DEG

Test System: EVERFINE GO-2000B_V1 SYSTEM V2.0.406.11

Humidity: 65.0%

Test Distance: 8.000m [K=0.7063]

Remarks: LF-GIR015YM0350H, D265-10S7P-V1.1